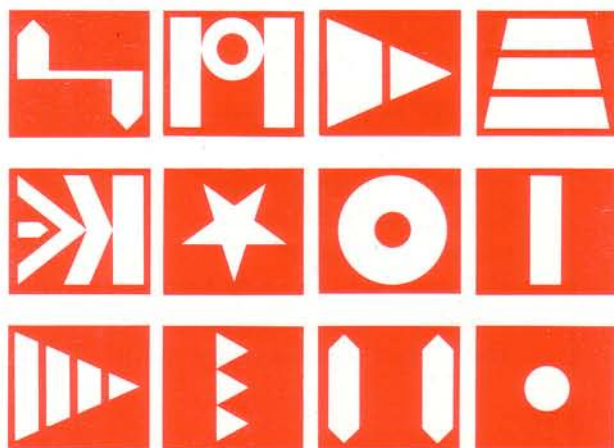


*Campagnolo*<sup>®</sup>

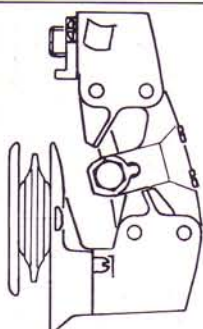


RECORD<sup>®</sup>

# RECORD®

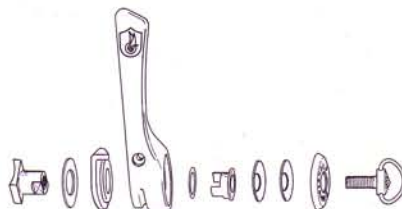
The bicycle is becoming even more demanding and even mechanically perfect components must also be aesthetically pleasing. The components of the RECORD group are the result of an innovative and painstaking study by the Campagnolo Research Laboratory. The results are the unique items in which form follows function.

The rear derailleur utilizing the traditional parallelogram design has been race proven in years of victories in the most prestigious races. To enhance its function, a third spring has been fitted within the upper body. This delivers smoother operation in crossover conditions (e.g. 42 x 12) and reduce friction when the chainline is straight (e.g. 53 x 12).



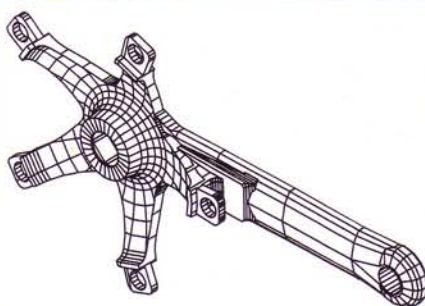
Detail of the locking system of the cable clamp screw with blocking hole in the washer to prevent cable slippage.

To improve the efficiency of the shift lever mechanism the RECORD levers employ 3/32" bearings running in specially treated races. This guarantees smooth, predictable, lever response. The brake levers allow external or concealed cable routing, with no reduction of braking efficiency.



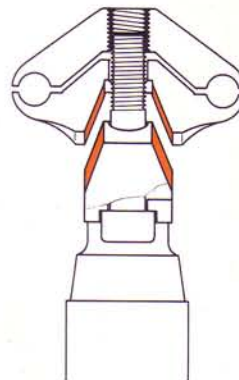
The one way friction is achieved through friction between bearings pre-tensioned with springs and flat races.

The applications of new technology in the manufacture of the cable ends guarantees even higher breaking strength while maintaining cable flexibility close to the nipple. The crankset which utilizes the crank arm as one of the chainring fixing points has been CAD engineered to establish the optimal cross section in terms of its strength to weight ration.

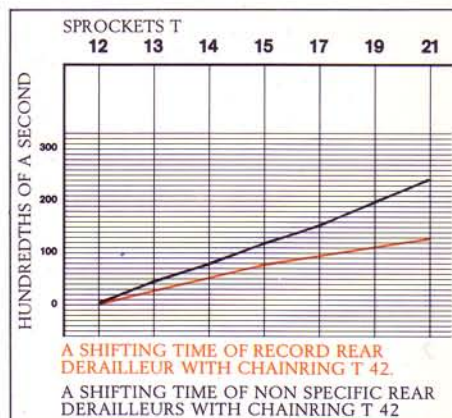
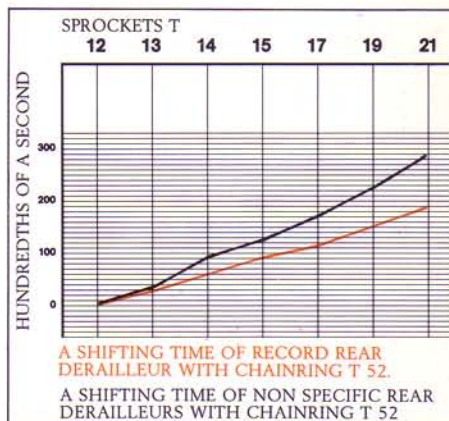


Right hand Record crank as shown in the CAD model.

This design reduces internal stresses under pressure, which enhances the already high Campagnolo standards of reliability and safety. The seat-pin has a single fixing-bolt featuring friction adjustment. The contact surfaces utilize special



finishes (hard chromed, textured aluminium) to improve their friction characteristics. The infinite adjustment that is possible allows the saddle to be positioned in the most comfortable, anatomically correct position.



Campagnolo Record: a group like no other. For those who demand the best from themselves and from their bikes.





# RECORD®

## RECORD. group

| CODE No.                                 | PRODUCT              | TECHNICAL DATA  |
|--|----------------------|---|
| 0104018<br>0104019                       | FRONT CHANGER        | clip-on version<br>braze-on version   |
| 0118071<br>0118072<br>0118073<br>0118074 | SHIFTING LEVERS      | braze-on version for gear<br>braze-on version for front changer<br>braze-on (on top of tube) version<br>clip-on version |
| 322/101<br>321/101                       | * HUBS SET           | small flange version } 24-28-32-36-40 holes<br>large flange version } for 6 and 7 speed freewheel                       |
| 306/101                                  | CHAINSET             | 165-167.5-170-172.5-175-177.5-180 mm cranks<br>rings from 39 to 57 teeth  |
| 303/101                                  | * BOTTOM BRACKET SET | axle 68 SS or 70 SS   |
| 305/501                                  | ** PEDALS SET        | with medium, long and extra long toe-clips complete with toe-straps   |
| 304/104                                  | * HEAD SET           |   |
| 115/00                                   | BRAKES SET           | 47 mm and 52 mm, normal and allen bolt version  |
| 316/101<br>316/102                       | SEAT PINS            | styled 180 mm long $\varnothing$ 25-25.8-26-26.2-26.4-26.6-26.8<br>circular 130 mm long    27-27.2                      |

\* Available in the following threads: Italian, English, French.

\*\* Available in the following threads: Italian and French.

## RECORD. pista group

| CODE No.           | PRODUCT              | TECHNICAL DATA   |
|--------------------|----------------------|--|
| 321/101<br>322/101 | * HUBS SET           | large flange version 24-28-32-36-40 holes<br>small flange version 24-28-32-36-40 holes |
| 316/102            | CHAIN SET            | 165-167.5-170-172.5-175-177.5-180 mm cranks<br>rings from 42 to 70 teeth               |
| 303/102            | * BOTTOM BRACKET SET | axle 65 SP or 68 SP or 70 SP   |

\* Available in the following threads: Italian, English, French.

*Campagnolo®*